

PREMIUM EFFICIENCY INDUCTION MOTORS



Premium Efficiency Induction Motors

EIM Induction Motors, are ideal for commercial and industrial applications and are capable of providing constant torque at variable speed ranges. Ideal for dust collection applications.

Features:

- Inverter duty motor
- C-Face footless or footed
- Side mounted terminal box
- Wide range of voltages available
- Continuous duty at 40° C
- CE mark

Parts and Services for Superior Performance

Technical Data

Model #	HP	RPM	Volts	Enclosure	Nema Frame	F.L. Amps	Weight (lb)
EMF 0146-2	1	3600	230/460	TEFC	56	2.7A/1.35A	27.5
EMF 0157-2	1	3600	575	TEFC	56	1.1A	27.5

Model #	HP	RPM	Volts	Enclosure	Nema Frame	F.L. Amps	Weight (lb)
EMF 0246-2	2	3600	230/460	TEFC	143T	5.0/2.5A	50.7
EMF 0257-2	2	3600	575	TEFC	143T	2.0A	50.7

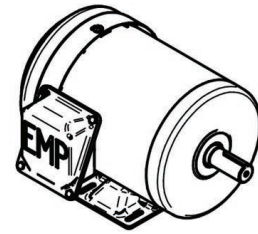
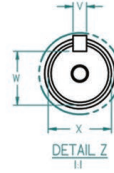
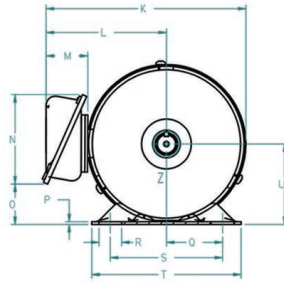
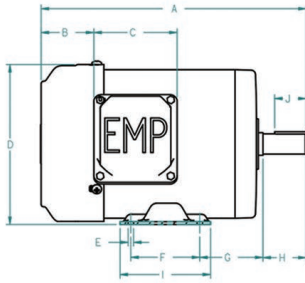
Model #	HP	RPM	Volts	Enclosure	Nema Frame	F.L. Amps	Weight (lb)
EMC 0346-2	3	3600	230/460	TEFC	182TC	7.4 / 3.7A	97.0
EMC 0357-2	3	3600	575	TEFC	182TC	3.2A	99.0

Electrical and Mechanical Parts

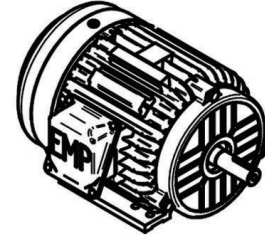
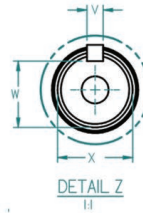
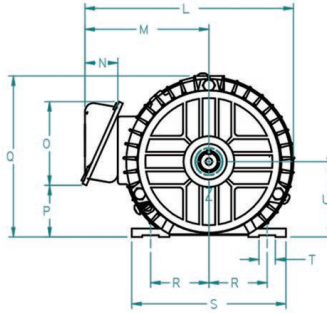
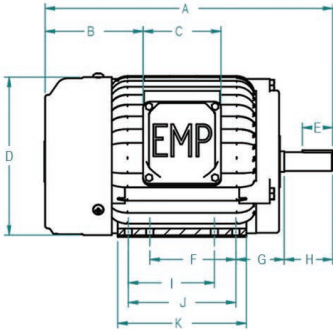
1930 52nd Avenue, Lachine, Québec, Canada H8T 2Y3
T.: +1.514.633.5933 E.: info@emp-ds.com

emp-ds.com

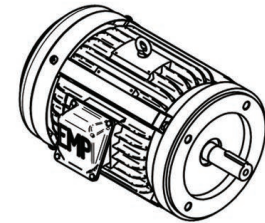
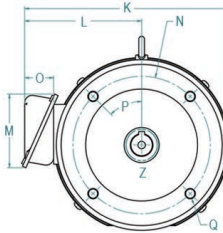
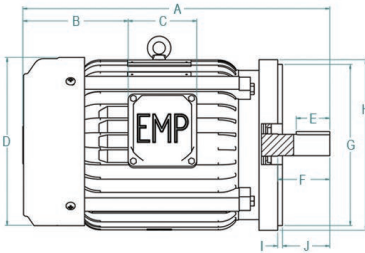
EIM Series



**EMF 0146-2
&
EMF 0157-2**



**EMF 0246-2
&
EMF 0257-2**



**EMC 0346-2
&
EMC 0357-2**

emp-ds.com

EMP MODEL: EMF 0146-2 & EMF 0157-2

Units	A	B	C	D	E	F	G	H	I	J
Mm	279,4	55,88	93,98	177,8	101,6 - 8,636	76,2 +/- 0,762	69,85 +/- 2,286	47,752	101,6	35,814 min
Inches	11	2,2	3,7	7	4-0,34	3 +/- 0,03	2,75 +/- 0,09	1,88	4	1,41 min

K	L	M	N
236,22	149,86	55,88	101,6
9,3	5,9	2,2	4

Units	O	P	Q	R	S	T	U
Mm	35,56	3,048	61,976 +/- 0,762	61,976 +/- 0,762	123,952 +/- 0,762	165,1	88,9 - 1,524
Inches	1,4	0,12	2,44 +/- 0,03	2,44 +/- 0,03	4,88 +/- 0,03	6,5	3,5 - 0,06

V	W	X
4,7752 + 0,0508	13,1318	15,875 - 0,0127
0,188 + 0,002	0,517	0,625 - 0,0005

EMP MODEL: EMF 0246-2 & EMF 0257-2

Units	A	B	C	D	E	F	G	H	I	J	K
Mm	121,92	91,44	185,42	35,814 min	101,6 +/- 0,762	57,15 +/- 2,286	57,15	101,6 +/- 0,762	127 +/- 0,762	172,72	345,44
Inches	4,8	3,6	7,3	1,41 min	4 +/- 0,03	2,25 +/- 0,09	2,25	4 +/- 0,03	5 +/- 0,03	6,8	13,6

L	M	N
261,62	160,02	55,88
10,3	6,3	2,2

Units	O	P	Q	R	S	T	U
Mm	101,6	50,8	195,58	69,85 +/- 0,762	181,864	203,2 - Ø 8,636 + 1,27	88,9 - 1,524
Inches	4,0	2,0	7,7	2,75 +/- 0,03	7,16	8 - Ø 0,34 + 0,05	3,5 - 0,06

V	W	X
4,7752 + 0,0508	19,5834 - 0,381	22,225 - 0,0127
0,188 + 0,002	0,771 - 0,015	0,875 - 0,0005

EMP MODEL: EMC 0346-2 & EMC 0357-2

Units	A	B	C	D	E	F	G	H	I	J
Mm	411,3784	141,0716	91,8972	225,2726	45,0088	69,85	215,9	228,6	6,2992	63,5508
Inches	16,196	5,554	3,618	8,869	1,772	2,750	8,500	9,000	,248	2,502

K	L	M	N
274,0152	156,718	98,7806	Ø 184,15
10,788	6,170	3,889	Ø 7,250

Units	O	P	Q
Mm	38,735	45°	Ø 13,9954
Inches	1,525	45°	Ø ,551

R	S	T
8,001	32,2834	Ø 28,575
,315	1,271	Ø 1,125